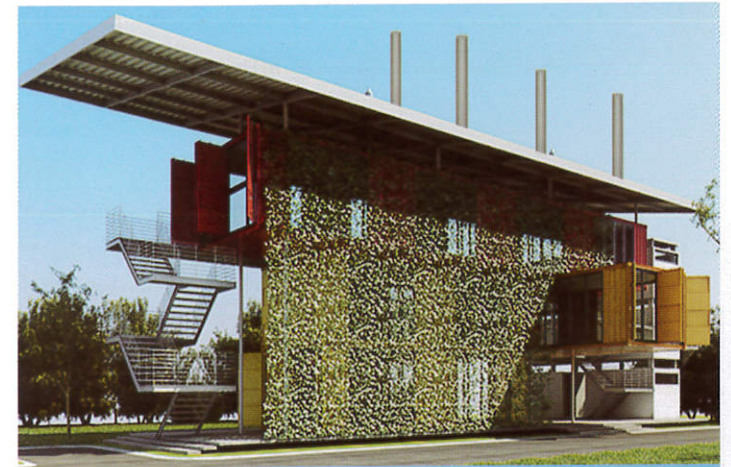


Emerging Malaysian Architects

30 under 40

REVISITED 2015



GREEN BIN AUTISM, GREEN SCHOOL SEPUTEH



SERIES OF FOLDING HOUSE, TWIN PALMS SUNGAI LONG

GREEN BIN AUTISM, GREEN SCHOOL SEPUTEH

The school's architectural properties in creating spaces of altering sensory inputs for the behavioral interventions that is versatile to cater for the large scope of symptoms for autism.

The Sustainable features of the school allow users to observe and explore the living environment and create outdoor learning classroom. The ideal goal is to create a compatible sensory environment to cater for learning of essential skills for autistic children.

SERIES OF FOLDING HOUSES, TWIN PALMS SUNGAI LONG

Inspired by the extension of the undulating landscape, each house's concept begins by tracing the existing landform and pathway, which is then continued upwards or downwards creating an extension to the landscape.

The folding design incorporates a blend of indoor and outdoor living spaces that extend out into the landscape and beyond.



**ARCHING CHEE HOONG,
MICHAEL
CH&I ARCHITECTURE
SDN BHD**